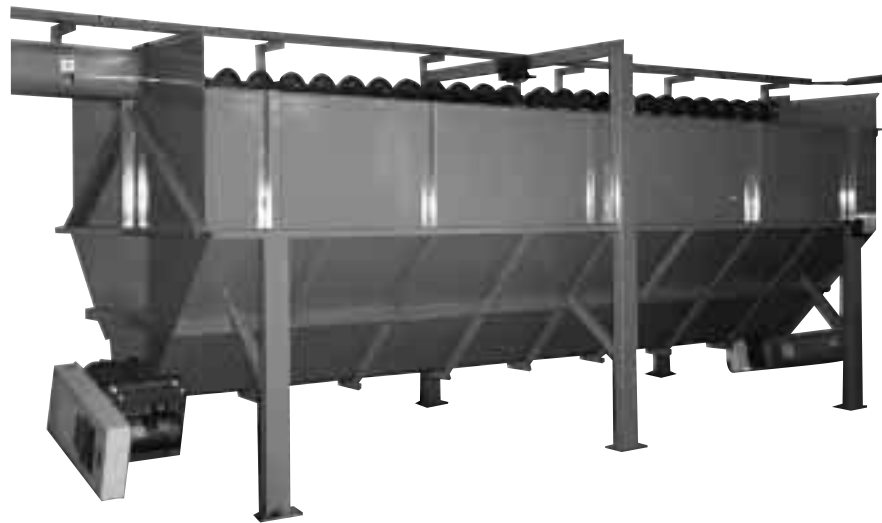


## MORE ANCO EQUIPMENT CONT.



### ANCO No. 634-S INCLINED BLOW TANK

—The inclined tank is designated for low ceiling space and to simplify the installation. No pit need be provided for the large radius blow pipe. All tanks are built to suit your specific requirements. This type of Blow Tank is built to adjust to the characteristics of the different processes and is ASME certified.



### ANCO No. 1114 RAW MATERIAL BIN

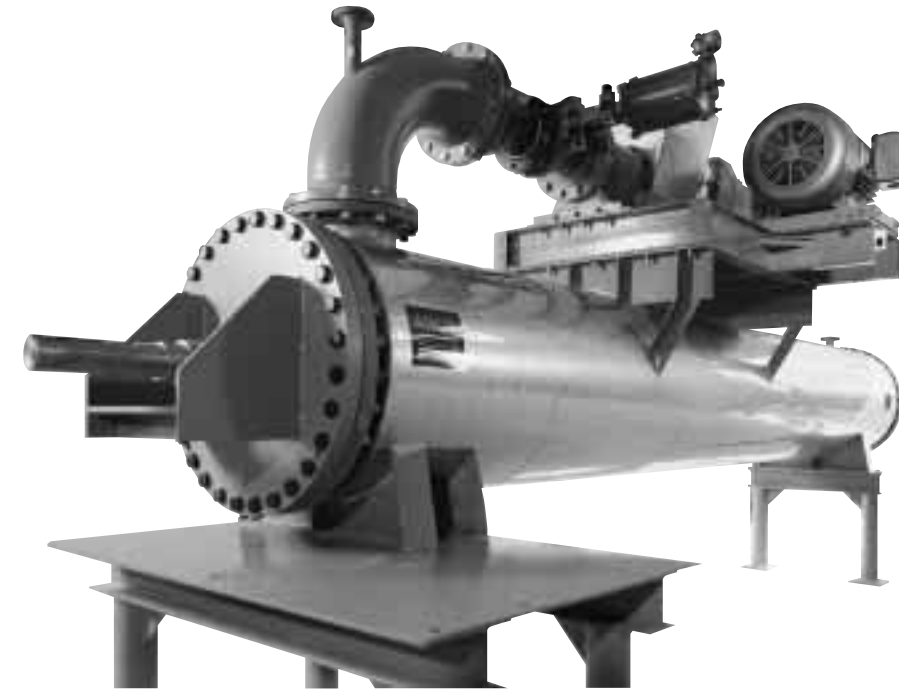
—This is a typical receiving hopper for raw material, ready to accept bulk unloading of full trucks. It can be installed in a pit in the ground. The capacity is designed to suit your requirements, generally from 40,000 lbs. to 100,000 lbs. or more. The design is flexible to allow the blending of bones with soft material, or raw material segregation to produce different qualities of tallow.

ANCO-EAGLIN, Inc.

120 North Chimney Rock Road • Greensboro, North Carolina 27409  
336-855-7800 • FAX 855-7831 • e mail: ancoeaglin@aol.com

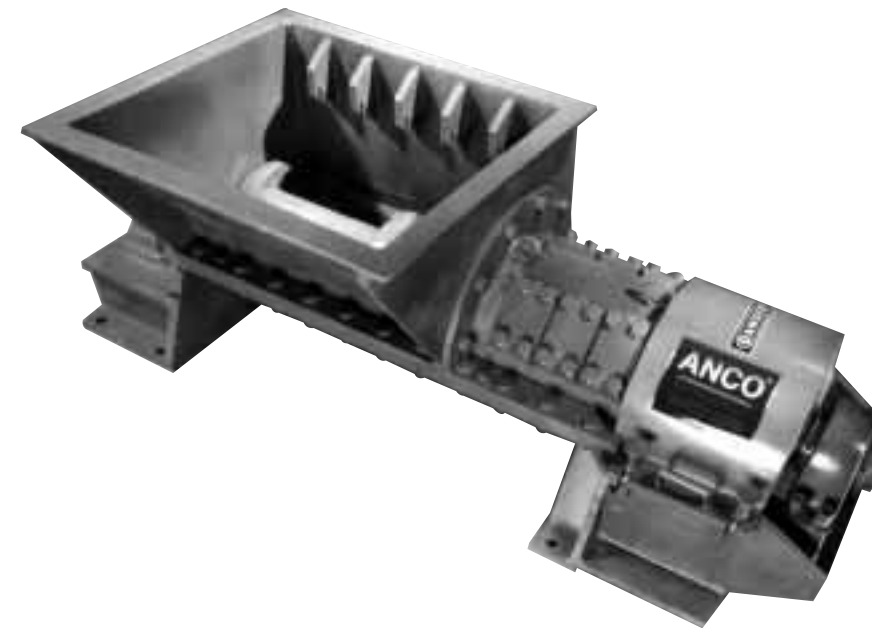


## MORE ANCO EQUIPMENT



### ANCO 1212 HYDROLYZER

—The high protein value of poultry feather and hog hair has long been recognized. The ANCO 1212 Series Hydrolyzer, with its improved STEAM SAVER discharge, can turn these often difficult disposal problems into profitable operations. Utilizing 125 psig steam will achieve maximum digestibility which can approach 90%. It is available in capacities of 5,000 lbs/hr or 15,000 lbs/hour or 30,000 lbs/hour.



### ANCO PREBREAKERS

—The body material of ANCO Prebreakers is cast alloy steel, stronger and tougher than cast iron, which means longer equipment life. Up to a year between major overhauls, adding up to dollars saved for you. ANCO Prebreakers feature an easy-to-maintain outboard pillow-block bearing design to help reduce shaft deflection, eliminate jamming, improve the seal and reduce the wear on the anvil and hammer section. Because ANCO Prebreakers feature large 36-1/2" and 38-1/2" long hoppers, whole carcasses can be fed into either of our two models without precutting.



## MORE ANCO EQUIPMENT CONT.



### ANCO No. 1081 INCLINED and No. 1083 HORIZONTAL SCREW CONVEYOR

—All ANCO Screw Conveyors are designed to be of the highest quality helicoid flight type, made of a helix, formed from a flat steel bar mounted on a pipe or shaft by welding. It is a smooth continuous flight except on very large diameter sizes. Our engineering department will prepare layouts and specify suitable types of trough, pitch, discharge spouts, covers, drives, etc. to fit your requirements.



### ANCO 603G PERC PAN

—Its patented handling system provides a continuous product flow from the cooker to the screw press. By adjusting the variable speed drive, the delivery rate can be easily changed to meet the exact needs of the press. This simplistic design has a single drive, coupled with heavy duty engineered chain attached to drag bars. Because of its design and rugged construction, many units installed 15 to 20 years ago are still in operation today.

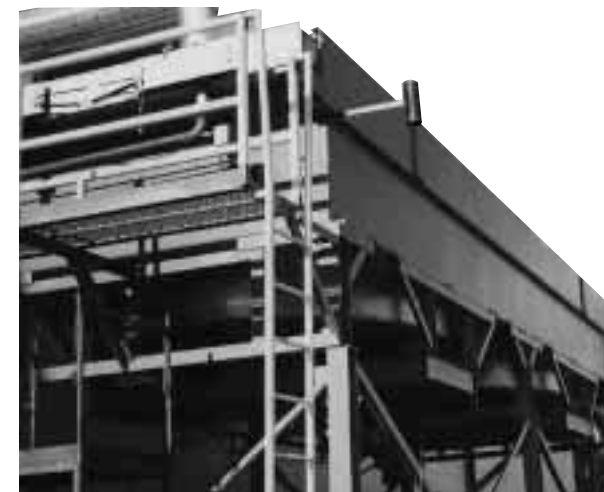
**CONDENSING EQUIPMENT** — A key component in any successful rendering system is vapor condensing equipment. Without proper condensing, cookers are less efficient, resulting in higher operating costs and usually lower product quality. There is no single solution for all rendering applications; therefore, ANCO® offers several options appropriate for varying plant sizes.

## MORE ANCO EQUIPMENT CONT.



### ANCO SHELL AND TUBE CONDENSERS

—These Condensers are pre-engineered for exact capacities. The exchangers physical size can be modified for space limitations vertically or horizontally. The materials of construction can be specified. This will allow the unit to be used for heating potable water, cooling towers, or other water sources.



### ANCO AIR COOLED CONDENSERS

—In this type of unit the vapors from the cooking process are piped to the condenser through a bank of tubes. These tubes are typically constructed with a number of fins to increase the effective surface for transfer of heat between the vapors and the cooling air. Fan(s) will blow cooling air over the finned tubes. Heat is thus transferred from the vapors through the tube walls and fins to the cooling air, resulting in the condensation of the vapors. No water usage is required. Varying sizes can be tailored to customer requirements.



### ANCO No. 1044 JET CONDENSER

—This unit is especially adapted for condensing steam and noxious vapors when used in conjunction with a No. 103B Hot Well. The water requirements are 60 to 70 GPM at 60°F to condense 2,000 lbs/hour of steam to 133°F tail pipe temperature. Manufactured in a six-inch size, the Jet Condenser weighs 220 lbs. net.