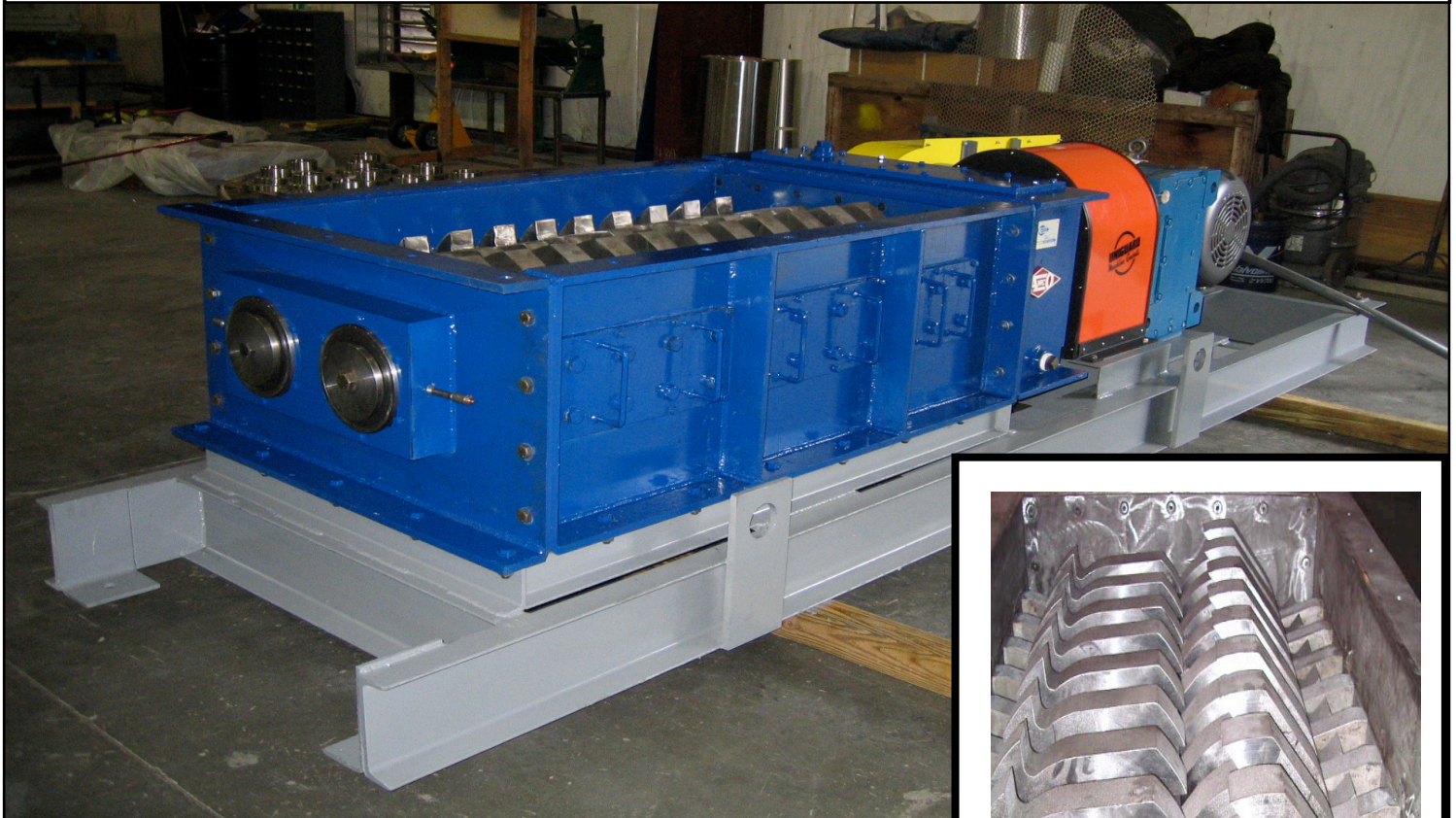




ANCO "Duracut" Crusher

The ANCO "Duracut" Crusher is designed specifically for bone crushing or whole carcass crushing. A "one-pass" design that discharges a particle size suitable for feeding any conveying or pumping system, and small enough for any batch or continuous rendering process.



FEATURES--

- **Capacities from 5 - 50 tons of raw material per hour** including whole carcasses.
- **Close tolerances** between teeth that allow provide a "cutting" action which **result in Lower HP** requirements compared to other designs. .
- Duracut teeth are **machined from Solid block** for additional strength and wear.
- **Easy maintenance**, with simple, fast access to all wear components

ANCO "DURACUT" S.S. SANITARY USDA DESIGN

ANCO®" Crushers" provides for exceptional durability, performance & overall value.

Contact **ANCO-EAGLIN Inc.** for information about processing capacity and HP requirements for you particular application.

ANCO-EAGLIN, Inc.

120 North Chimney Rock Rd. • Greensboro, North Carolina 27409, USA
TEL (336) 855-7800 • FAX (336) 855-7831 • E-mail: info@ancoeaglin.com
HOME PAGE: www.ancoeaglin.com