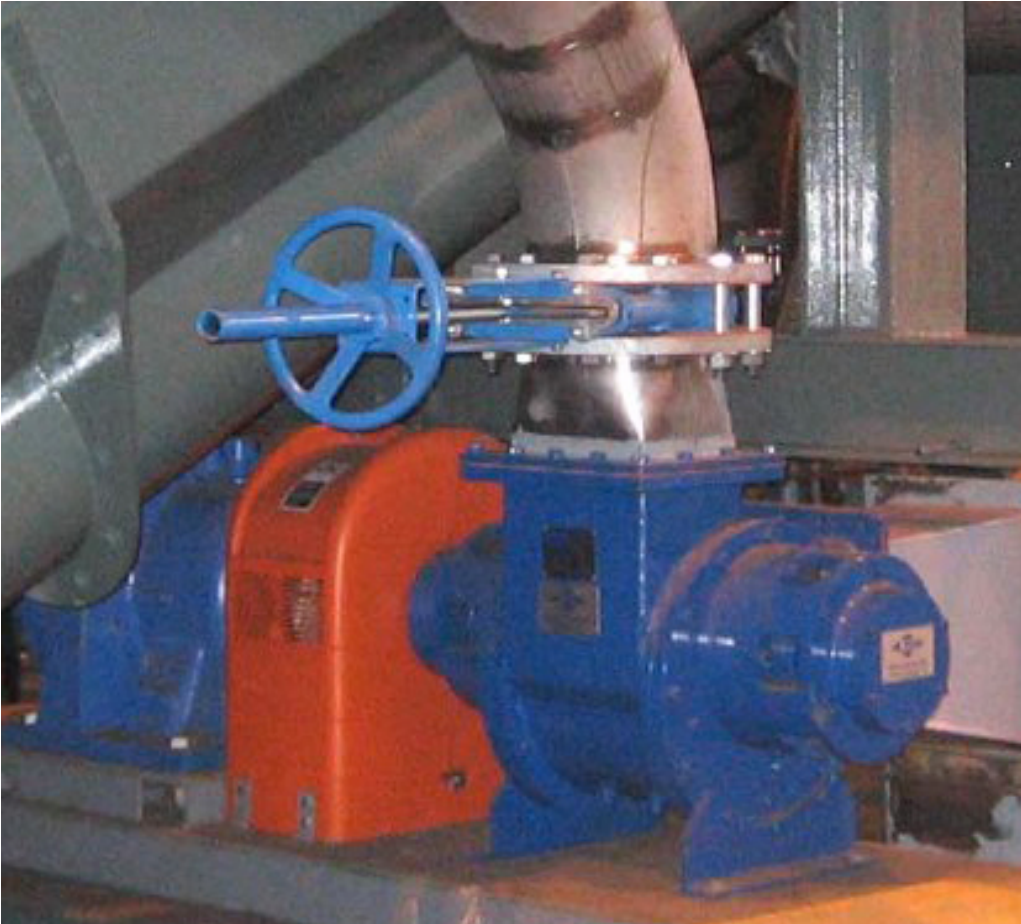




ANCO "Lamella" Pump



The ANCO® "Lamella" Pump is ideally suited for viscous raw or cooked material. Impeller vanes rotating in an eccentric "cam like" motion, this pump design offers several additional advantages to tradition pumping methods.

Effectively transfers ground; meat, fish, poultry, pork, beef, and other semi-solid products, also handles a variety of product sizes, from very small to coarse; including chunked meat, fats, bones, slurries, and wastes.

ANCO-Lamella Pump used in a Fish Meal Production Operation,

FEATURES-

- **High pumping capacity**— to **80,000 lbs (36827 kg) per hour, manufactured in several sizes to meet any capacity requirement. (**larger capacities available)
- **Easily changeable configurations** make it easily adaptable to both new and existing installations.
- **Easy maintenance**, with simple, fast access to all wear components.
- **Auto-reverse feature** that helps to clear any blockages.
- Simple and rugged design minimizes maintenance costs and helps to ensure a continuous operation.
- **Optional variable** speed control for a precise flow rate.
- **Two year (24 month)** warranty on motor and drive assembly.
- **The ANCO® "Lamella" Pump provides for exceptional safety, durability, longevity, performance & overall value.**

Specifications are subject to change with out notice.

Contact [ANCO-EAGLIN](mailto:ancoeaglin@aol.com) for information about processing capacity and HP requirements for you particular application.

ANCO-EAGLIN, Inc.

120 North Chimney Rock Rd. • Greensboro, North Carolina 27409, USA
TEL (336) 855-7800 • FAX (336) 855-7831 • E-mail: ancoeaglin@aol.com
HOME PAGE: www.ancoeaglin.com